

ImplantBook®

2020 | Global guide for Dealers and Dentists



DENTAL IMPLANTS

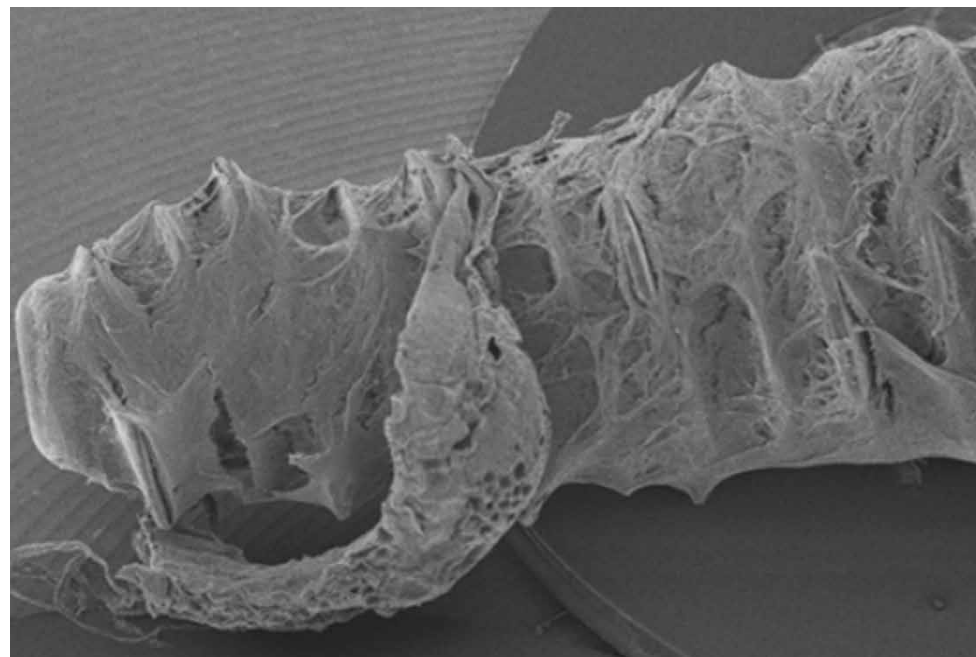
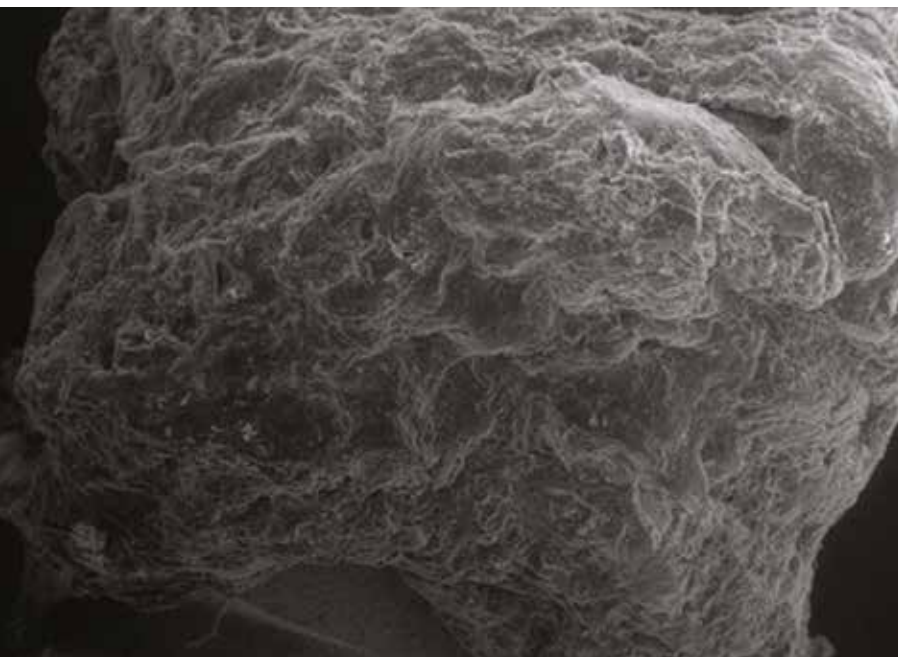
AROUND IMPLANTOLOGY

CONGRESSES

PREVIEW >>> **AEEDC SPECIAL EDITION**

THE FIRST BIOACTIVE SURFACE WITH CGF

P. 6

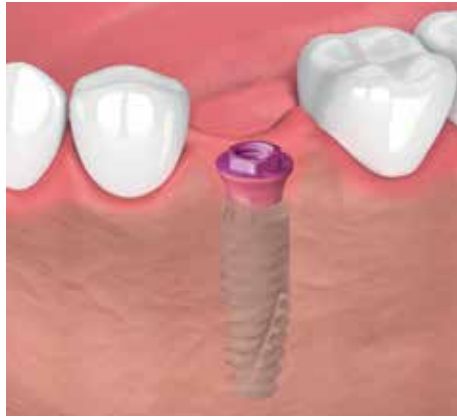


powered by **SILFRADENT | OSTEO-CARE PROJECT**

info@silfradent.com

• **Dental Tech**

Shape Tissue Effect



Dental Tech has expanded its wide range of products with a new prosthetic component that promotes the conditioning of peri-implant tissues. It is applied at the same time as the surgical phase of implant placement, maintaining freedom of flexibility during the prosthetic phases. The transmucosal abutment radically simplifies the prosthetic procedure, since it moves the engagement platform of the external connection implants from the bone level to the soft tissue level.

It can be prosthetized both in immediate loading, in a variety of secondary components suitable for the planned prosthetic project, and in deferred loading, preserved by a protective cap that leaves the soft tissue undisturbed to optimize healing and complete implant integration.

The abutment's external connection platform offers a wide range of prosthetic solutions to better manage the prosthetic needs of each project.

Once positioned according to the prosthetic emergency, it is no longer removed, guaranteeing the stability of the surrounding peri-implant tissues. Acting on the transmucosal abutment with a Torque of 30Ncm, perfect matching between the abutment-implant interface is ensured, thus preventing the migration and bacterial colonization on the "pumping effect" action.

The abutment is available for FTP, ImpLogic® and ImpLassic implant connections, in different types of transmucosal height.

Visit us at: AEEDC 2020, Hall 4, Booth 4C04

info@dental-tech.it // www.dentaltechitalia.com

• **Dental Tech**

Restyling of the ImpLassic HX3 Implant Line



Development and growth are two concepts that have always characterized Dental Tech's professional history. The recent modernization and innovation of the Dental Tech manufacturing plant involved important changes also in terms of product, such as the Restyling implemented on the ImpLassic HX3 Implant line.

Compared to the previous ImpLassic HX2, the morphology of the implant has been revised in order to give greater primary stability of the coils. The main features of the ImpLassic HX3 can be summarized as follows:

- Implant with cylindrical body and conical apex.
- Possibility of modulating the surgical procedure according to the bone features of the clinical case.
- Suitable to all bone types and even in the case of non-compact bone it is able to achieve a good primary stability.
- Dedicated implant insertion driver that does not affect the Implant-Prosthetic connection.
- Universal hexagon external connection, with 4.1 platform and 2.7 hexagon, suitable for any type of prosthetic reconstruction, both screwed and cemented.
- The geometry of the coils promotes bone consistency both qualitatively and quantitatively.
- Double-principle self-tapping coil for both a better contact with the bone and primary stability.
- Tapered apical portion with large cutting areas for greater penetration capacity.
- Atraumatic apex.

ImpLassic HX3 is available in diameters $\varnothing 3.25$, $\varnothing 4.0$ and $\varnothing 4.5$ and in different lengths, according to the diameter (8, 10, 11.5, 13 and 16 mm).

Visit us at: AEEDC 2020, Hall 4, Booth 4C04

info@dental-tech.it // www.dentaltechitalia.com



DentalTech[®]
DENTAL IMPLANT SYSTEM

www.dentaltechitalia.com



Dental Tech

Since 1977 innovation,
technology and solutions to
help dentists to work better.



DENTAL TECH SRL
Via G. Di Vittorio, 10/12
20826 Misinto (MB), Italy



Tel. + 39 02 967.20.218
info@dental-tech.it
www.dentaltechitalia.com

